

<b>401</b>  Pag 348	<b>402</b>  Pag 348	<b>403</b>  Pag 349	<b>404</b>  Pag 349	<b>407</b>  Pag 350	<b>408</b>  Pag 350
<b>409</b>  Pag 351	<b>410</b>  Pag 352	<b>411</b>  Pag 352	<b>426</b>  Pag 353	<b>427</b>  Pag 354	<b>425</b>  Pag 354
<b>413</b>  Pag 355	<b>417</b>  Pag 355	<b>414</b>  Pag 356	<b>419</b>  Pag 357	<b>420</b>  Pag 357	<b>415</b>  Pag 358
<b>416</b>  Pag 359	<b>428</b>  Pag 360	<b>429</b>  Pag 360	<b>430</b>  Pag 360	<b>418</b>  Pag 361	<b>421</b>  Pag 362
<b>422</b>  Pag 362	<b>423</b>  Pag 362	<b>424</b>  Pag 362			

# 401-402

Componenti di supporto / Conveyor support components / Stützelemente

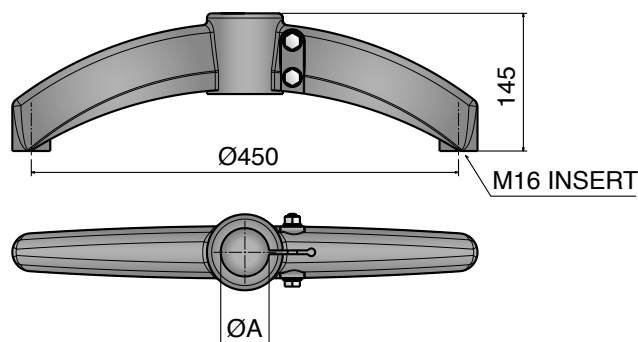
## Materiale / Material / Materialien:

Basi: Poliammide/Base: Polyamide/Halter: Polyamid

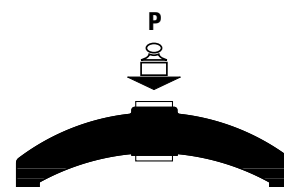
Viti e rondelle: Acciaio inox/Screws and washers: Stainless steel/Schrauben und Scheibe: Edelstahl

Inserti e dadi: ottone nichelato/Inserts nuts: nickel plated brass/Mutter: Messing vernickelt

## 401 Base a due braccia Bipod / Zweibeinhalter



Part	Article-Nr.	ØA
401	40101	48,3
401	40105	50,9
401	40102	60,3



**Tube sliding load resistance**

$P=8000N$

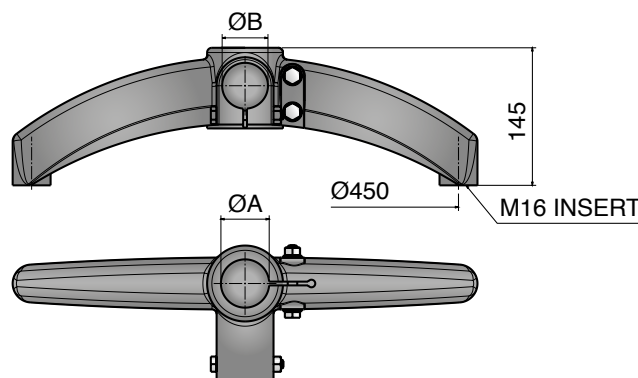
**Max applicable load**

$P=9600N$

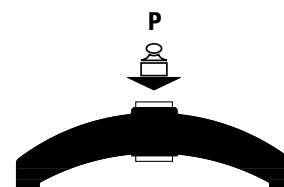
**Bolts tightening torque**

25 N.m

## 402 Base a due braccia 180° con giunto Bipod 180° with connector / Zweibeinhalter 180° m. Verbinder



Part	Article-Nr.	ØA	ØB
402	40201	48,3	48,3
402	40205	50,9	48,3
402	40202	60,3	48,3
402	40203	48,3	42,4
402	40206	50,9	42,4
402	40204	60,3	42,4



**Tube sliding load resistance**

$P=8000N$

**Max applicable load**

$P=8000N$

**Bolts tightening torque**

25 N.m

# Materiale / Material / Materialien:

Basi: Poliammide/Base: Polyamide/Halter: Polyamid

Viti e rondelle: Acciaio inox/Screws and washers: Stainless steel/Schrauben und Scheibe: Edelstahl  
Inserti e dadi: ottone nichelato/Inserts nuts: nickel plated brass/Mutter: Messing vernickelt

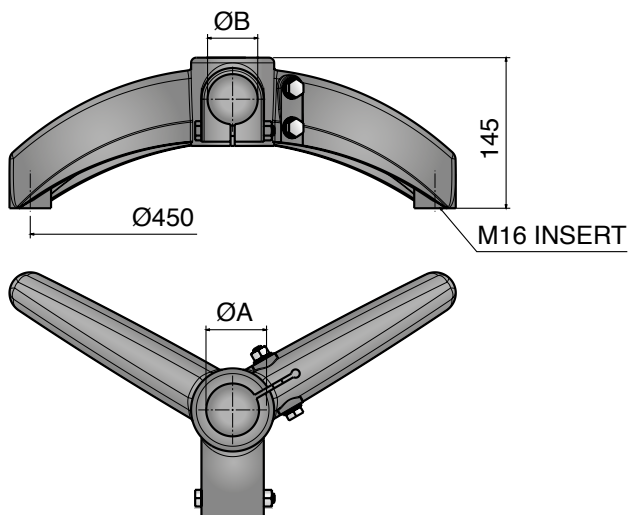
# 403-404

Componenti di supporto / Conveyor support components / Stützelemente

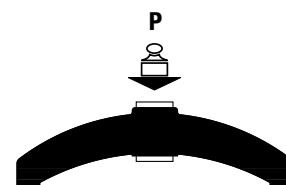
## 403

Base a due braccia 120° con giunto

Bipod 120° with connector / Zweibeinhalter 120° m. Verbinder



Part	Article-Nr.	ØA	ØB
403	40301	48,3	48,3
403	40305	50,9	48,3
403	40302	60,3	48,3
403	40303	48,3	42,4
403	40306	50,9	42,4
403	40304	60,3	42,4



Tube sliding load resistance

$P=8000N$

Max applicable load

$P=8000N$

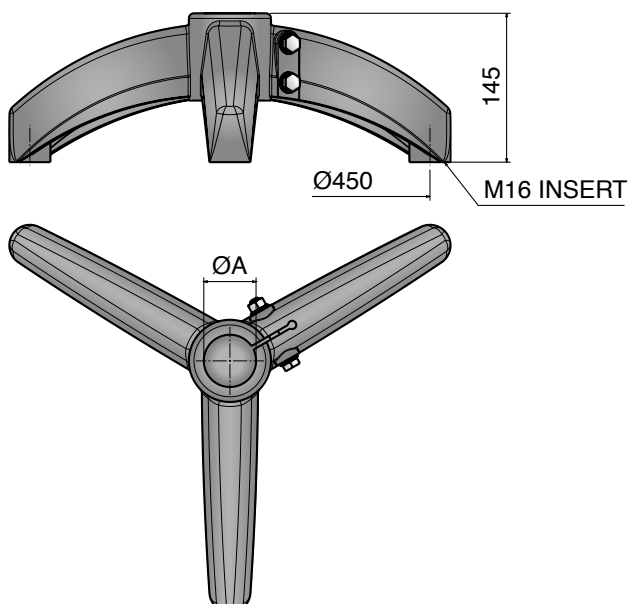
Bolts tightening torque

25 N.m

## 404

Base a tre braccia

Tripod / Dreibeinhalter



Part	Article-Nr.	ØA
404	40401	48,3
404	40405	50,9
404	40402	60,3



Tube sliding load resistance

$P=8000N$

Max applicable load

$P=10000N$

Bolts tightening torque

25 N.m

# 407-408

Componenti di supporto / Conveyor support components / Stützelemente

## Materiale / Material / Materialien:

Testata: Poliammide/Side bracket: Polyamide/Halter: Polyamid

Viti e rondelle: Acciaio inox/Screws and washers: Stainless steel/Schrauben und Scheibe: Edelstahl

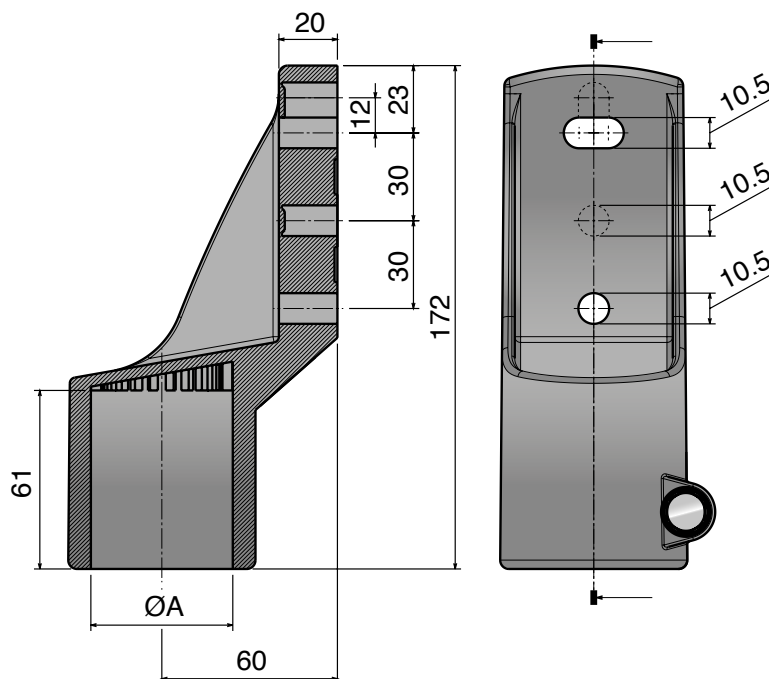
Dadi: ottone nichelato/Nuts: nickel plated brass/Mutter: Messing vernickelt

## 407

Testata laterale

Side mounting top bracket / seitlicher Stützkopf

Max recommended tightening torque 2 kg/m



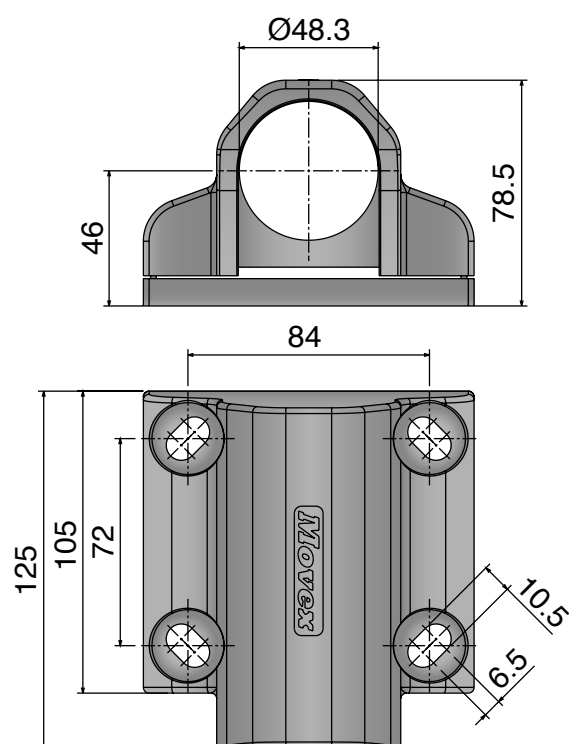
Part	Article-Nr.	ØA
407	40701	48,3
407	40702	50,9

## 408

Testata laterale

Side mounting top bracket / seitlicher Stützkopf

Max recommended tightening torque 2,5 kg/m



Part	Article-Nr.	ØA
408	40801	

**Materiale / Material / Materialien:**

Testata: Acciaio inox/Support head: stainless steel/Halter: Edelstahl  
Viti e rondelle: Acciaio inox/Screws and washers: Stainless steel /  
Mutter: Edelstahl

**409**

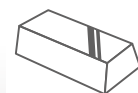
Componenti di supporto / Conveyor support components / Stützelemente

**409**

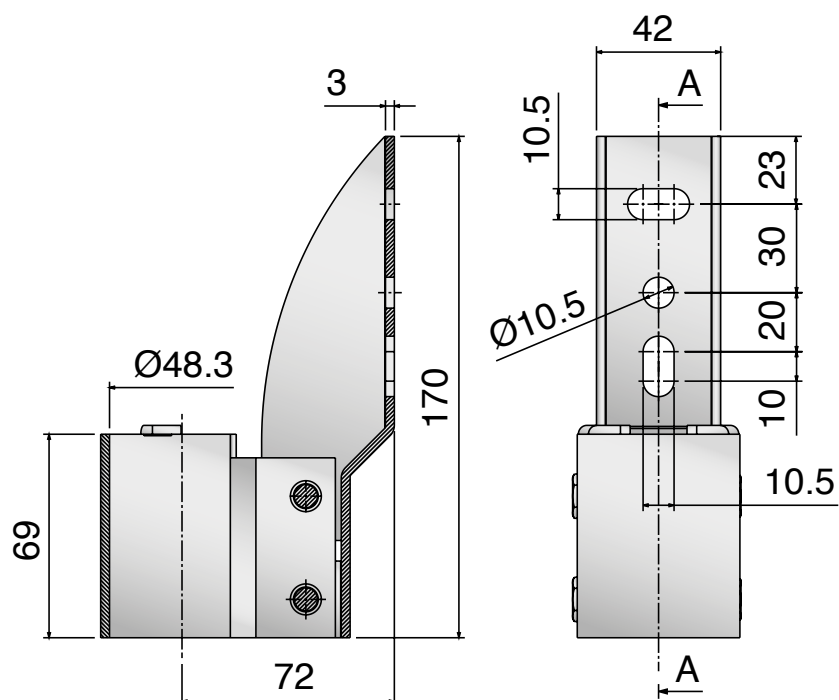
**Testata laterale**

**Side mounting top bracket / seitlicher Stützkopf**

Part	Article-Nr.	ØA
409	40901	48,3

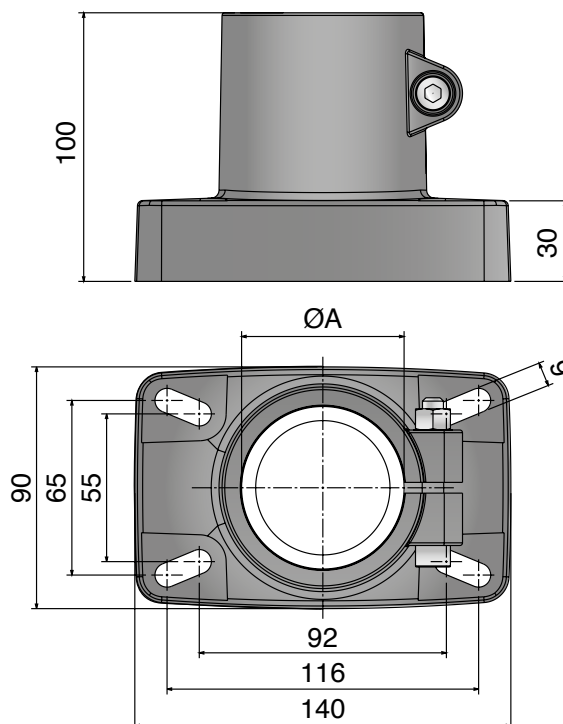


**Stainless  
steel  
AISI 304**



## 410 Testata d'appoggio Support head / Stützkopf

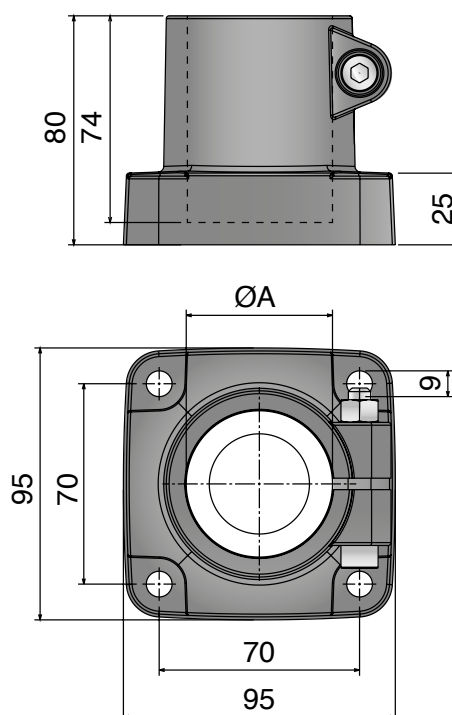
Max recommended tightening torque 3,5 kg/m



Part	Article-Nr.	ØA
410	41001	48,3
410	41002	60,3

## 411 Testata d'appoggio Support head / Stützkopf

Max recommended tightening torque 1,5 kg/m



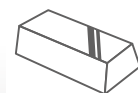
Part	Article-Nr.	ØA
411	41101	48,3
411	41102	50,9

# 426

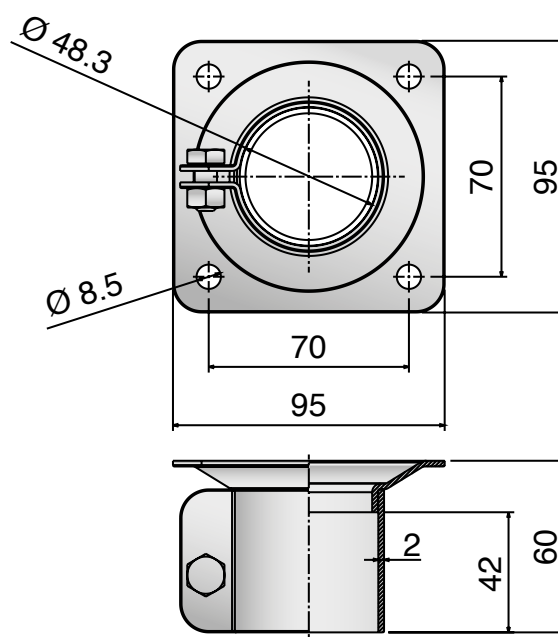
Testata d'appoggio  
Support head / Stützkopf



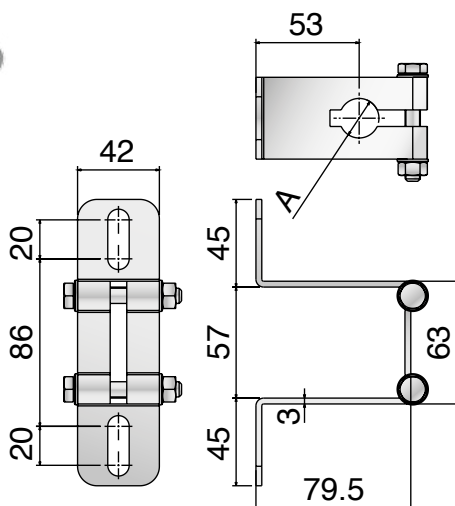
Part	Article-Nr.
426	42601



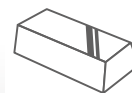
Stainless  
steel  
AISI 304



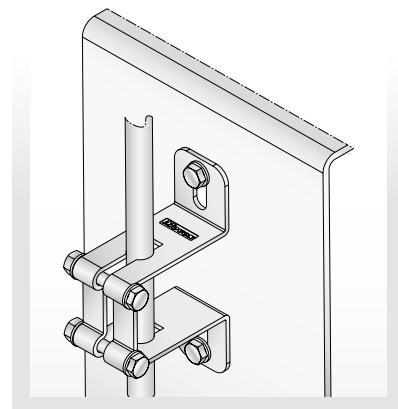
## 427 Supporto laterale Side bracket / Seitenhalter



Part	Article-Nr.	ØA
427	42701	16
427	42702	20



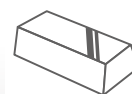
**Stainless  
steel  
AISI 304**



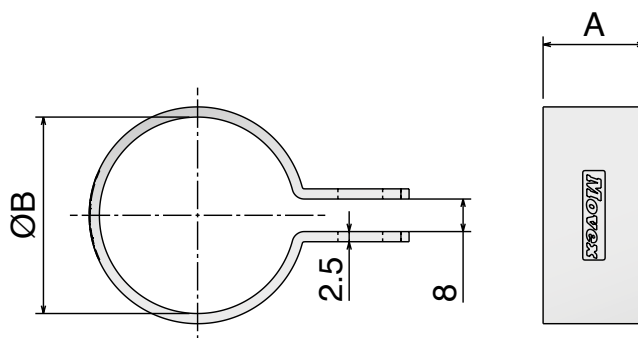
## 425 Morsetto a collare Clamp collar / Klemmschelle



Part	Article-Nr.	A	ØB
425	42501	25	48,3
425	42511	25	50,8
425	42521	76,2	50,8



**Stainless  
steel  
AISI 304**



# Materiale / Material / Materialien:

Giunto: Poliammide / Joint: Polyamide / Verbinder: Polyamid

Viti e rondelle: Acciaio inox / Screws and washers: Stainless steel / Schrauben und Scheibe: Edelstahl  
Inserti e dadi: ottone nichelato / Inserts nuts: nickel plated brass / Mutter: Messing vernickelt

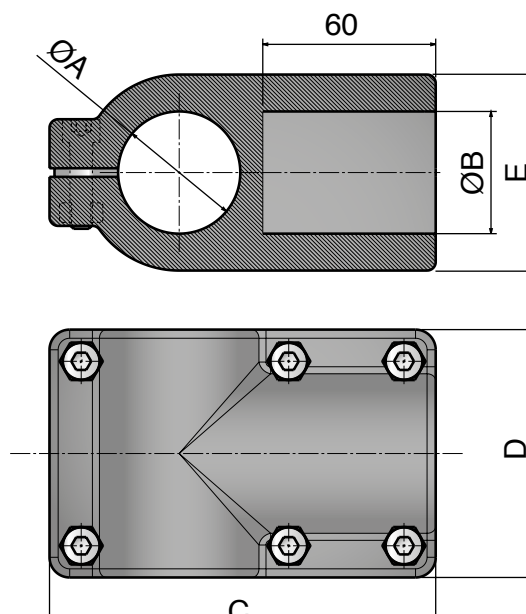
# 413-417

Componenti di supporto / Conveyor support components / Stützelemente

## 413 Giunto di collegamento Connecting joint / Verbindungselement

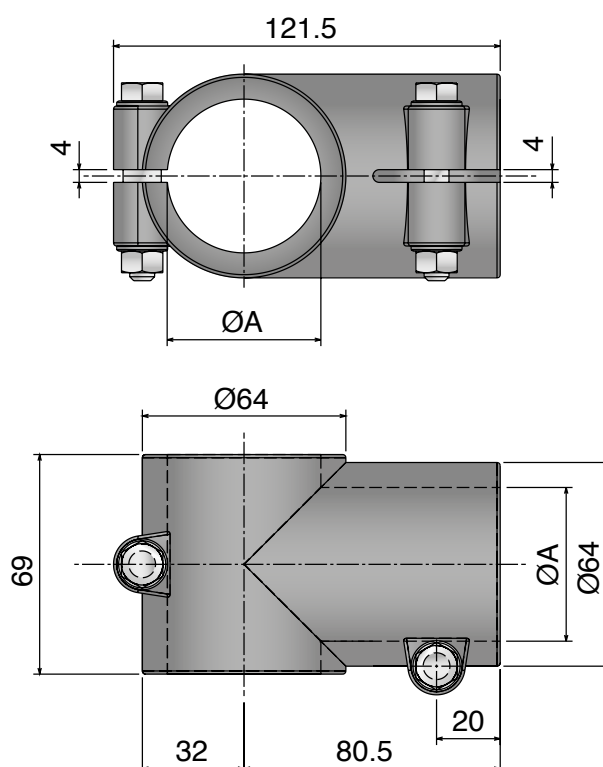
Max recommended tightening torque 1,5 kg/m

Part	Article-Nr.	ØA	ØB	C	D	E
413	41301	48,3	48,3	134	86	68
413	41302	60,3	48,3	146	98	80
413	41303	60,3	60,3	146	98	80



## 417 Giunto di collegamento Connecting joint / Verbindungselement

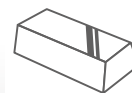
Part	Article-Nr.	ØA
417	41701	48,3
417	41702	50,9



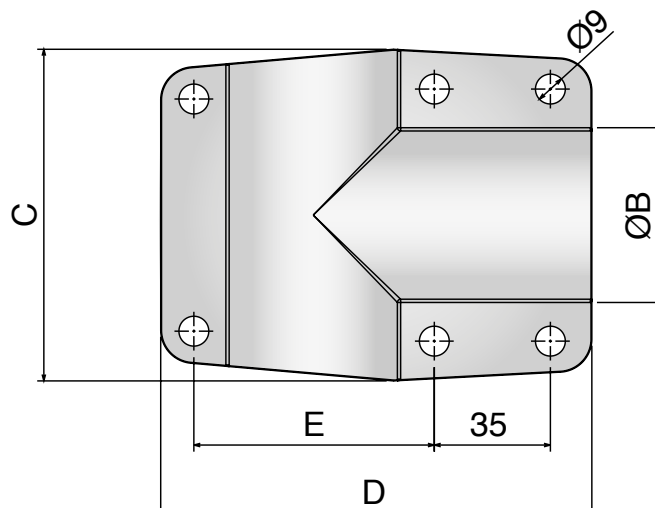
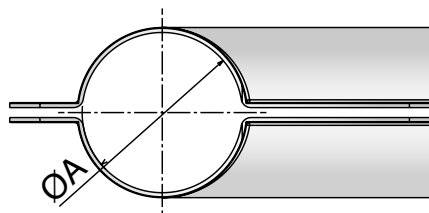
## 414

Giunto di collegamento (acciaio inox)  
Connecting joint (SS) / Verbindungselement (Edelstahl)

Part	Article-Nr.	ØA	ØB	C	D	E
414	41401	48,3	48,3	100	130	72,5
414	41402	60,3	60,3	110	150	92,5



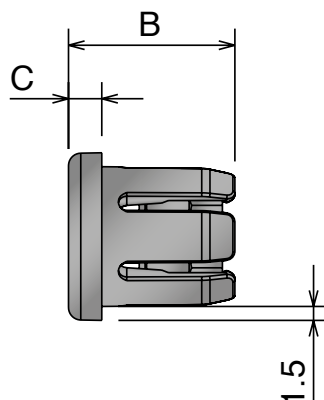
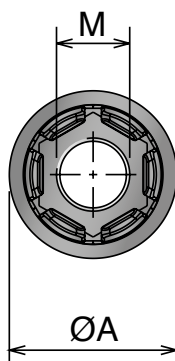
Stainless  
steel  
AISI 304



## 419

### Tappi ad espansione

### Expansions plugs / Gewindezapfen, Spreizbar

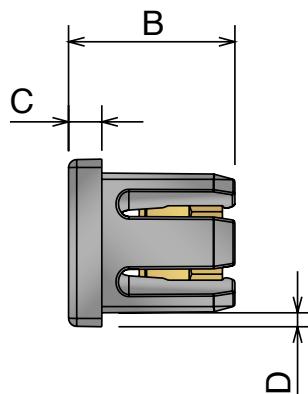
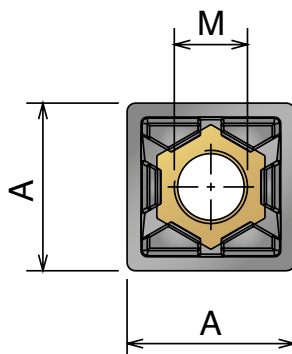


Part	Article-Nr.		ØA	B	C	D
	Brass Bush	PA Bush				
419	41901	-	20	20	4	M8
419	41902	-	20	20	4	M10
419	41903	41913	38	40	5	M8
419	41904	41914	38	40	5	M10
419	41905	41915	42,4	40	5	M8
419	41906	41916	42,4	40	5	M10

## 420

### Tappi ad espansione

### Expansions plugs / Gewindezapfen, Spreizbar

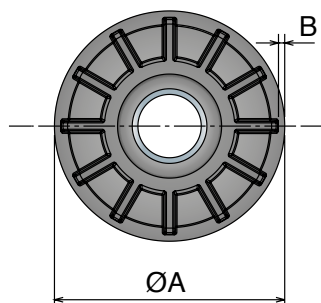
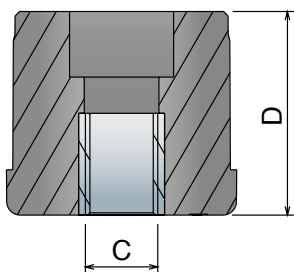


Part	Article-Nr.		A	B	C	D	M
	Brass Bush	PA Bush					
420	42001	-	20	20	4	1,5	M8
420	42002	-	20	20	4	1,5	M10
420	42003	-	20	20	4	2	M8
420	42004	-	20	20	4	2	M10
420	42005	42015	40	40	5	2	M8
420	42006	42016	40	40	5	2	M10

## 415

## Tappi tondi filettati

## Threaded bushings for round tubes / Gewindezapfen f. Rund-Rohr

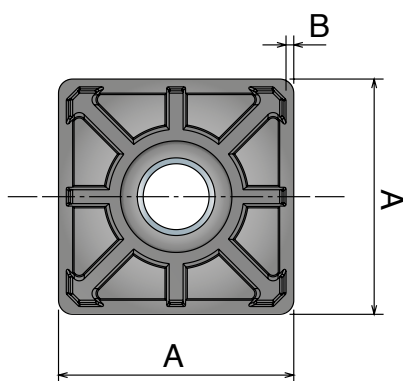
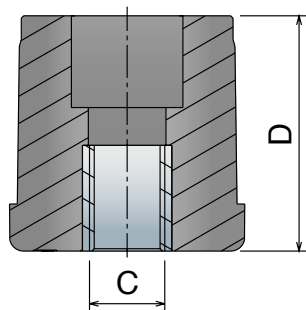


Part	Article-Nr.	ØA	B	C	D	Part	Article-Nr.	ØA	B	C	D	
415	41507	30	1	M10	33	415	41553	48,3	2	M10	48	
415	41508			M12	33	415	41554			M12	48	
415	41509			M14	33	415	41555			M14	48	
415	41510			M16	33	415	41556			M16	48	
						415	41557					M20
415	41511	30	1,5	M10	33	415	41558	48,3	2,5	M10	48	
415	41512			M12	33	415	41559			M12	48	
415	41513			M14	33	415	41560			M14	48	
415	41514			M16	33	415	41561			M16	48	
						415	41562					M20
415	41515	30	2	M10	33	415	41563	50	1,5	M10	50	
415	41516			M12	33	415	41564			M12	50	
415	41517			M14	33	415	41565			M14	50	
415	41518			M16	33	415	41503			M16	50	
						415	41504					M20
415	41519	30	2,5	M10	33	415	41566	50,9	1,5	M10	50	
415	41520			M12	33	415	41567			M12	50	
415	41521			M14	33	415	41568			M14	50	
415	41522			M16	33	415	41569			M16	50	
						415	41570					M20
415	41523	38	1,5	M10	40	415	41571	50,9	2	M10	50	
415	41524			M12	40	415	41572			M12	50	
415	41525			M14	40	415	41573			M14	50	
415	41526			M16	40	415	41574			M16	50	
						415	41575					M20
415	41527	38	2	M10	40	415	41576	50,9	2,5	M10	50	
415	41528			M12	40	415	41577			M12	50	
415	41529			M14	40	415	41578			M14	50	
415	41530			M16	40	415	41579			M16	50	
						415	41580					M20
415	41531	38	2,5	M10	40	415	41581	60,3	1,5	M10	55	
415	41532			M12	40	415	41582			M12	55	
415	41533			M14	40	415	41583			M14	55	
415	41534			M16	40	415	41584			M16	55	
						415	41585					M20
415	41535	42,4	1,5	M10	43	415	41586	60,3	2	M10	55	
415	41536			M12	43	415	41587			M12	55	
415	41537			M14	43	415	41588			M14	55	
415	41538			M16	43	415	41505			M16	55	
415	41539			M20	43	415	41506					M20
415	41540	42,4	2	M10	43	415	41589	60,3	2,5	M10	55	
415	41541			M12	43	415	41590			M12	55	
415	41542			M14	43	415	41591			M14	55	
415	41543			M16	43	415	41592			M16	55	
415	41544			M20	43	415	41593					M20
415	41545	42,4	2,5	M10	43							
415	41546			M12	43							
415	41547			M14	43							
415	41548			M16	43							
415	41549			M20	43							
415	41550	48,3	1,5	M10	48							
415	41551			M12	48							
415	41552			M14	48							
415	41501			M16	48							
415	41502			M20	48							

# 416

## Tappi quadri filettati

### Threaded bushings for square tubes / Gewindezapfen f. Vierkant-Rohr

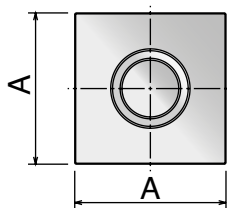
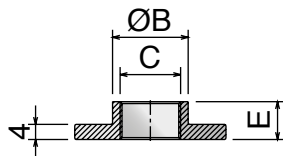


Part	Article-Nr.	ØA	B	C	D	Part	Article-Nr.	ØA	B	C	D
416	41601	25	1,5	M10	30	416	41643	45	2	M10	50
416	41602			M12	30	416	41644			M12	50
416	41611	30	1,5	M10	33	416	41645			M14	50
416	41603			M12	33	416	41646			M16	50
416	41612			M14	33	416	41647			M20	50
416	41604			M16	33	416	41648	50	1,2	M10	50
416	41613	30	2	M10	33	416	41649			M12	50
416	41614			M12	33	416	41650			M14	50
416	41615			M14	33	416	41651			M16	50
416	41616			M16	33	416	41652			M20	50
416	41617	35	1,5	M10	43	416	41653	50	1,5	M10	50
416	41618			M12	43	416	41654			M12	50
416	41619			M14	43	416	41655			M14	50
416	41620			M16	43	416	41656			M16	50
416	41621			M20	43	416	41657			M20	50
416	41622	35	2	M10	43	416	41658	50	2	M10	50
416	41623			M12	43	416	41659			M12	50
416	41624			M14	43	416	41660			M14	50
416	41625			M16	43	416	41609			M16	50
416	41626			M20	43	416	41610			M20	50
416	41681	38,1	1,6	M10	43	416	41661	50	2,5	M10	50
416	41682			M12	43	416	41662			M12	50
416	41683			M14	43	416	41663			M14	50
416	41684			M16	43	416	41664			M16	50
416	41685			M20	43	416	41665			M20	50
416	41686	38,1	3	M10	43	416	41666	50	3	M10	50
416	41687			M12	43	416	41667			M12	50
416	41688			M14	43	416	41668			M14	50
416	41689			M16	43	416	41669			M16	50
416	41690			M20	43	416	41670			M20	50
416	41627	40	1,2	M10	43	416	41671	60	2	M10	55
416	41628			M12	43	416	41672			M12	55
416	41629			M14	43	416	41673			M14	55
416	41630			M16	43	416	41674			M16	55
416	41631			M20	43	416	41675			M20	55
416	41632	40	1,5	M10	43	416	41676	60	3	M10	55
416	41605			M12	43	416	41677			M12	55
416	41633			M14	43	416	41678			M14	55
416	41606			M16	43	416	41679			M16	55
416	41634			M20	43	416	41680			M20	55
416	41635	40	2	M10	43						
416	41636			M12	43						
416	41637			M14	45						
416	41607			M16	45						
416	41608			M20	45						
416	41638	40	2,5	M10	45						
416	41639			M12	45						
416	41640			M14	45						
416	41641			M16	45						
416	41642			M20	45						

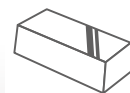
## 428

Tappi quadri filettati

Threaded bushings for square tube / Gewindezapfen f. Vierkant-Rohr



Part	Article-Nr.	A	B	ØB	D
428	42801	40	M16	20	10
428	42802	40	M20	23	11,5
428	42803	45	M16	20	10
428	42804	45	M20	23	11,5
428	42805	50	M16	20	10
428	42806	50	M20	23	11,5
428	42807	60	M16	20	10
428	42808	60	M20	23	11,5

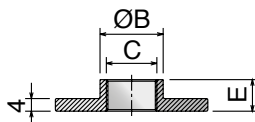


Stainless steel  
AISI 304

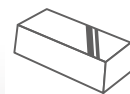
## 429

Tappi tondi filettati

Threaded bushings for round tube / Gewindezapfen f. Rund-Rohr



Part	Article-Nr.	C	ØB	E
429	42901	M16	20	10
429	42902	M20	23	11,5

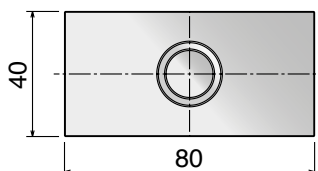
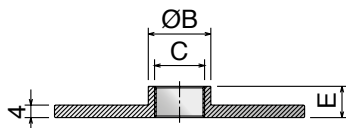


Stainless steel  
AISI 304

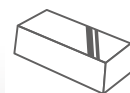
## 430

Tappi rettangolari filettati

Threaded bushings for rectangular tube / Gewindezapfen f. Rechteck



Part	Article-Nr.	C	ØB	E
430	43001	M16	20	10
430	43002	M20	23	11,5

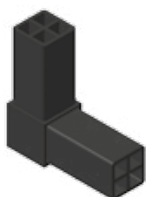


Stainless steel  
AISI 304

## 418

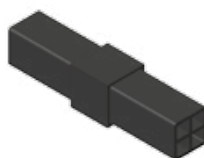
Giunto di collegamento  
Connecting joint / Verbindungselement

Type A



Part	Article-Nr.	Type
418	41801	A

Type B



Part	Article-Nr.	Type
418	41802	B

Type C



Part	Article-Nr.	Type
418	41803	C

Type D



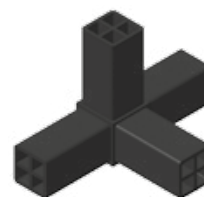
Part	Article-Nr.	Type
418	41804	D

Type E



Part	Article-Nr.	Type
418	41805	E

Type F



Part	Article-Nr.	Type
418	41806	F

Type G

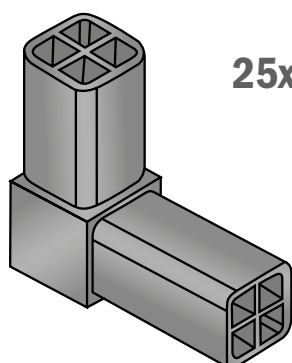


Part	Article-Nr.	Type
418	41807	G

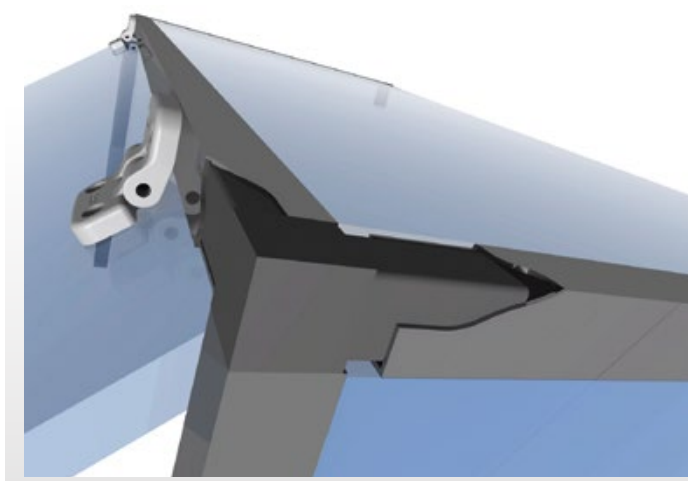
Type H



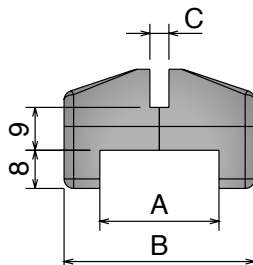
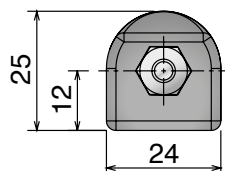
Part	Article-Nr.	Type
418	41808	H



For Tubes  
25x25x1.5 mm

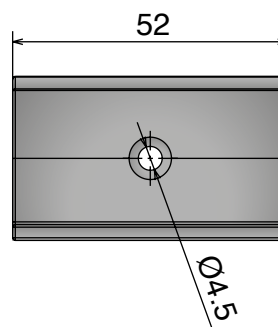
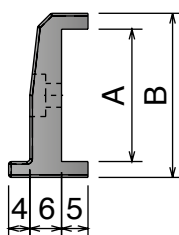
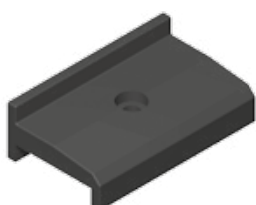


## 421 Blocco per pannelli Panel clamp / Panelklemme



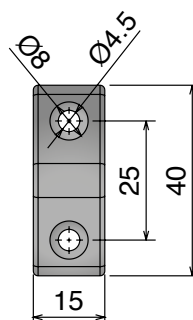
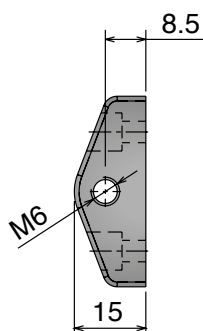
Part	Article-Nr.	A	B	C
421	42101	25	40	4
421	42102	25	40	5
421	42103	25	40	6
421	42104	30	45	4
421	42105	30	45	5
421	42106	30	45	6

## 422 Fermaporta Door stop / Türstopper



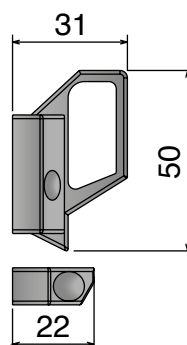
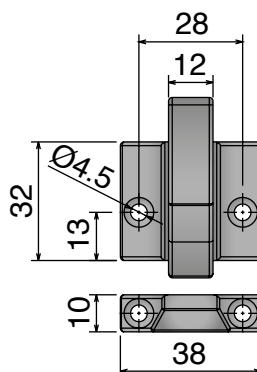
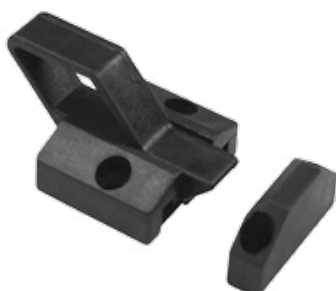
Part	Article-Nr.	A	B
422	42201	25	31

## 423 Blocchetto di fissaggio Fixing lock / Anschlag



Part	Article-Nr.
423	42301

## 424 Fermaporta a molla Spring loaded latch / Türverschluss



Part	Article-Nr.
424	42401